

\$846,806 - 5863 Lynette Circle, Bryan

MLS® #20004958

\$846,806

Bedroom, Bathroom,
Land on 4.86 Acres

Porterfield-Watson, Bryan, TX

â€¢ +/- 4.86 Acres on HWY 47

â€¢ Halfway Between TAMU and RELLIS
Campuses

â€¢ Great Visibility & Traffic Counts

â€¢ Close to Easterwood Airport, Atlas
Corporate Campus, TAMU Health Science,
Brazos Expo, and more

Essential Information

MLS® #	20004958
Price	\$846,806
Acres	4.86
Type	Land
Sub-Type	Commercial
Status	Active

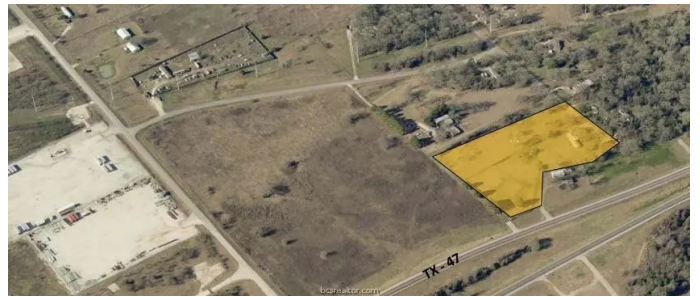
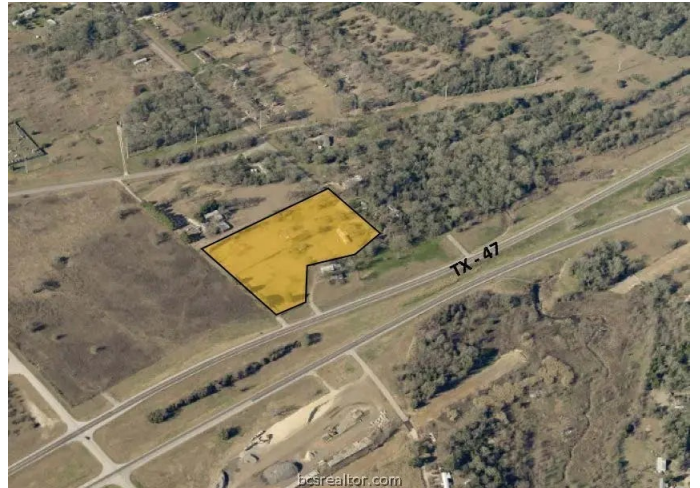
Community Information

Address	5863 Lynette Circle
Area	119
Subdivision	Porterfield-Watson
City	Bryan
County	Brazos
State	TX
Zip Code	77807

Exterior

Lot Description	Open Space
-----------------	------------

School Information



District Bryan

Additional Information

Days on Market 2026

Listing Details

Listing Agent John Parker

Listing Office Stafford Barrett Commercial

The information being provided is for consumers' personal, non-commercial use and may not be used for any purpose other than to identify prospective properties consumers may be interested in purchasing. The data is deemed reliable but is not guaranteed accurate by the MLS. Listing information is provided by Bryan-College Station Regional MLS.