

# \$749,000 - 5800 & 5850 Lynette Circle, Bryan

MLS® #22003580

**\$749,000**

Bedroom, Bathroom,  
Land on 6.95 Acres

Porterfield-Watson, Bryan, TX

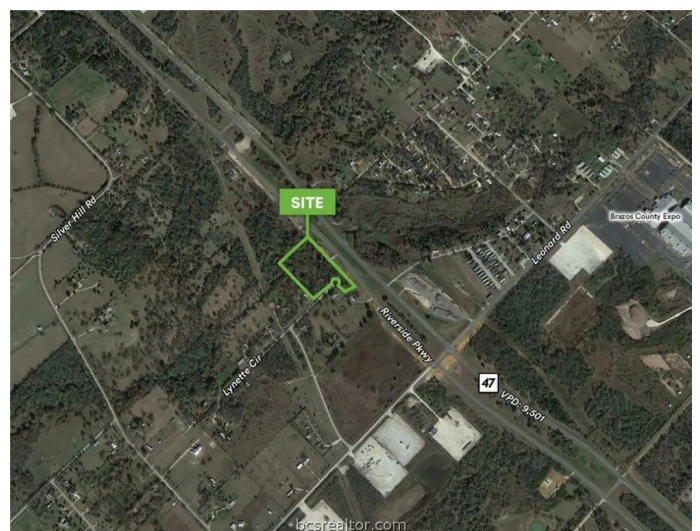
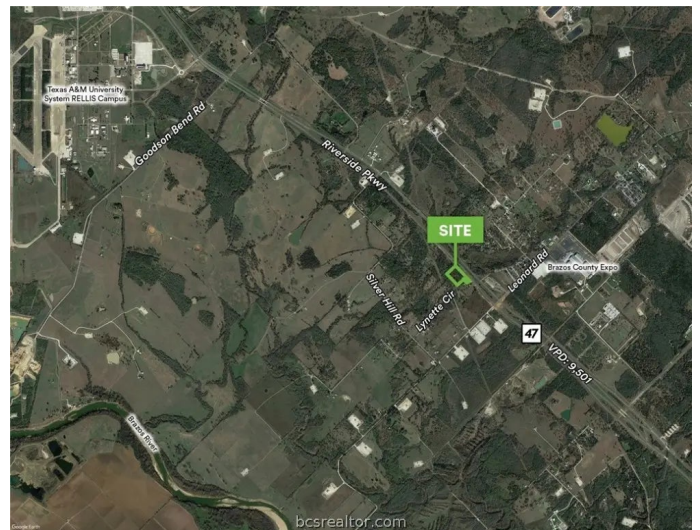
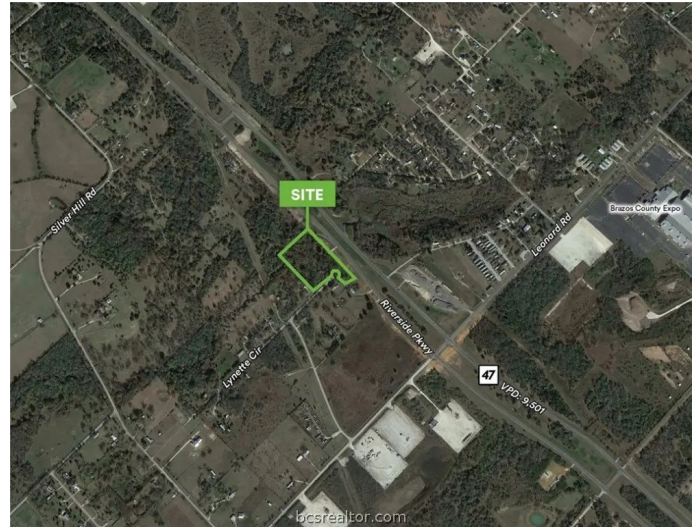
- Great visibility along Riverside Parkway
- Near Texas A&M Health Science Center and RELLIS
- Public water and electricity available
- Just north of Leonard Road, an area with increasing residential and commercial development
- Existing asphalt driveway to provide ingress/egress to Riverside Parkway
- Secondary access provided by Lynette Circle
- Zoned IC-RS, Innovation Corridor Retail Services

## Essential Information

MLS® #	22003580
Price	\$749,000
Acres	6.95
Type	Land
Sub-Type	Commercial
Status	Active

## Community Information

Address	5800 & 5850 Lynette Circle
Area	Other
Subdivision	Porterfield-Watson
City	Bryan
County	Brazos
State	TX
Zip Code	77807



## Amenities

Utilities	Electricity Available
-----------	-----------------------

## Exterior

Lot Description	Wooded
-----------------	--------

## School Information

District	Bryan
----------	-------

## Additional Information

Days on Market	1314
----------------	------

## Listing Details

Listing Agent	Jeremy Richmond
---------------	-----------------

Listing Office	Oldham Goodwin Group, LLC
----------------	---------------------------

The information being provided is for consumers' personal, non-commercial use and may not be used for any purpose other than to identify prospective properties consumers may be interested in purchasing. The data is deemed reliable but is not guaranteed accurate by the MLS. Listing information is provided by Bryan-College Station Regional MLS.