

\$32 - 2735 Nash Street, Bryan

MLS® #24009774

\$32

Bedroom, Bathroom,
Commercial Lease

N/A, Bryan, TX

An exceptional leasing opportunity in this 22641 square feet of retail space. This expansive area offers ample room and can be easily divided to suit your specific needs. With its strategic location near Blinn College, Downtown Bryan, and quick access to Hwy 6, this space promises to be a vibrant hub for your business endeavors.

Building 1 SF Available: 1,400 - 6,257 SF
Building 2 SF Available: 1,400 - 10,848 SF

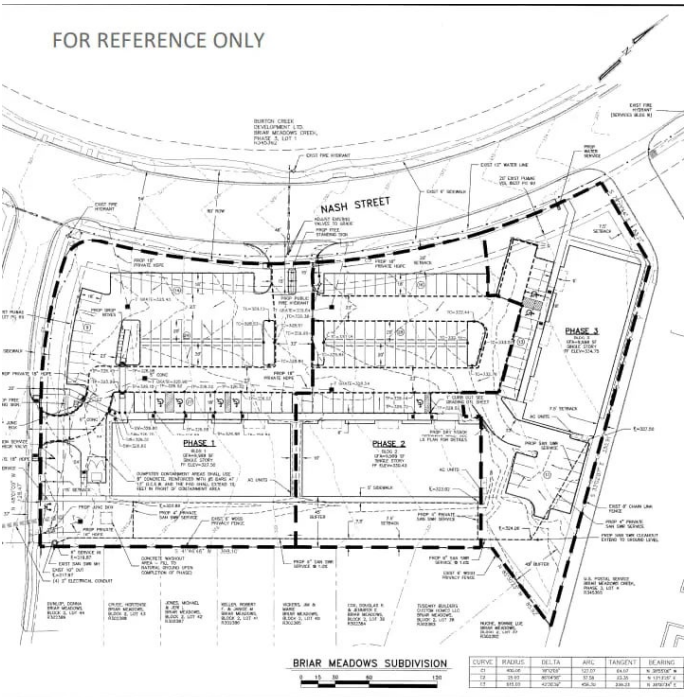
Conveniently located near Downtown Bryan
• Gateway corridor to Blinn College and St. Joseph's Medical District • Quick access to main thoroughfare Hwy-6 (39,893 VPD) • Adjacent to Bryan Post Office and The Camber Villas On Nash • Surrounded by booming residential & commercial developments

Built in 2025

Essential Information

MLS® #	24009774
Price	\$32
Year Built	2025
Type	Commercial Lease
Sub-Type	Retail
Status	Active

Community Information



Address	2735 Nash Street
Area	B06
Subdivision	N/A
City	Bryan
County	Brazos
State	TX
Zip Code	77802-1161

Amenities

Parking Spaces	82
----------------	----

School Information

District	Bryan
----------	-------

Additional Information

Days on Market	509
----------------	-----

Listing Details

Listing Agent	James Jones
Listing Office	Riverstone Companies, LLC

The information being provided is for consumers' personal, non-commercial use and may not be used for any purpose other than to identify prospective properties consumers may be interested in purchasing. The data is deemed reliable but is not guaranteed accurate by the MLS. Listing information is provided by Bryan-College Station Regional MLS.