

\$399,900 - 5323 Lyle Place, Bryan

MLS® #25005329

\$399,900

5 Bedroom, 4.00 Bathroom, 2,648 sqft
Residential on 0.37 Acres

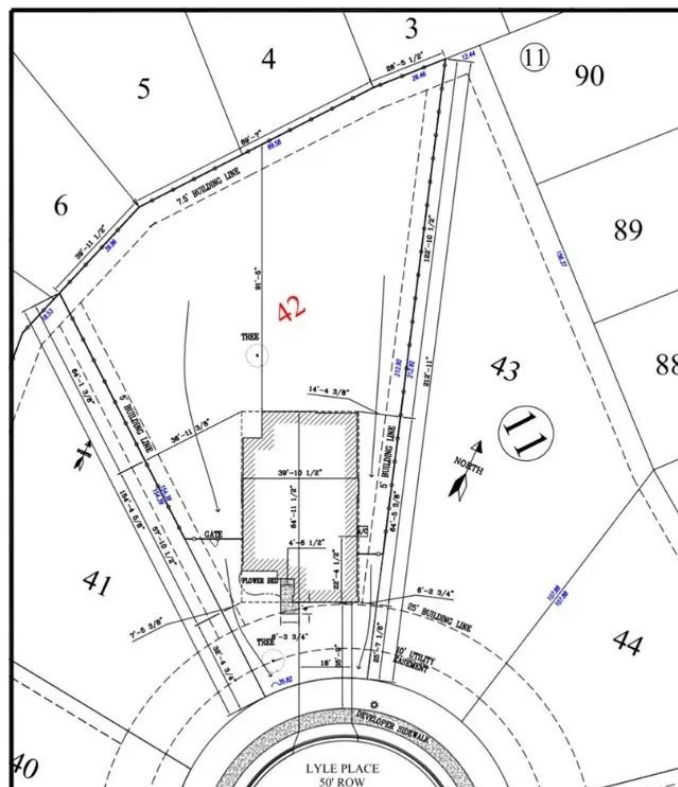
Pleasant Hill, Bryan, TX

Massive End-of-Cul-de-sac lot! The Fuller floor plan is perfect for buyers who want lots of space! The primary suite plus a guest suite is on the first floor. Upstairs are 3 very large bedrooms, two full baths, & a game room. This plan is wide open with a large island kitchen featuring granite counters, decorative backsplash, a window over the sink, stainless steel GE appliances, the bathrooms feature granite counters and one of the largest walk-in pantries you will see! The primary suite features a walk-in closet, separate tub and shower, and dual vanities. Storage abounds with great under stair storage, a large laundry room, oversized garage, a large storage closet in the game room and SO MUCH MORE! Finished Pictures are of an example home of same plan.

Built in 2025

Essential Information

MLS® #	25005329
Price	\$399,900
Bedrooms	5
Bathrooms	4.00
Full Baths	4
Square Footage	2,648
Acres	0.37
Year Built	2025
Type	Residential



Sub-Type	Single Family Residence
Style	Traditional
Status	Active

Community Information

Address	5323 Lyle Place
Area	120
Subdivision	Pleasant Hill
City	Bryan
County	Brazos
State	TX
Zip Code	77807

Amenities

Amenities	Maintenance Grounds, Management, Pool
Utilities	Electricity Available, High Speed Internet Available, Sewer Available, Trash Collection, Underground Utilities, Water Available
Features	Pool
Parking	Attached, Garage
# of Garages	2
Garages	Garage Door Opener
Pool	Community

Interior

Interior	Carpet, Vinyl
Interior Features	High Speed Internet, Window Treatments, Ceiling Fan(s), Dry Bar, Kitchen Island, Programmable Thermostat, Walk-In Pantry
Appliances	Dishwasher, Electric Range, Disposal, Microwave, ENERGY STAR Qualified Appliances
Heating	Central, Electric
Cooling	Central Air, Electric
Stories	Two

Exterior

Exterior Features	Sprinkler/Irrigation
Lot Description	Cul-De-Sac, Level, Trees
Roof	Composition
Construction	Brick, HardiPlank Type, Stone
Foundation	Slab

School Information

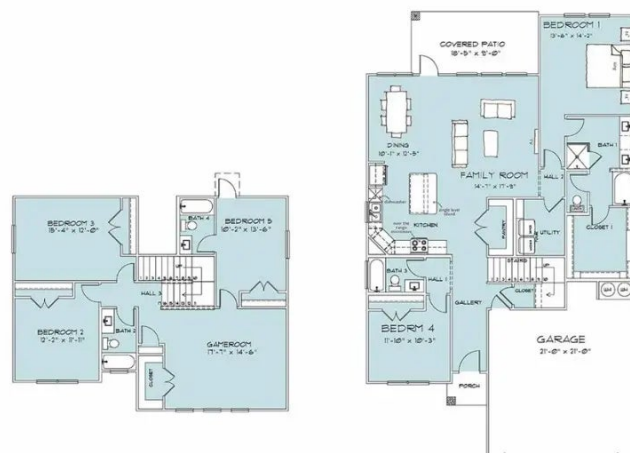
District Bryan

Additional Information

Days on Market 164
HOA Fees 500
HOA Fees Freq. Annually

Listing Details

Listing Agent Clay Lee
Listing Office CENTURY 21 Integra



The information being provided is for consumers' personal, non-commercial use and may not be used for any purpose other than to identify prospective properties consumers may be interested in purchasing. The data is deemed reliable but is not guaranteed accurate by the MLS. Listing information is provided by Bryan-College Station Regional MLS.