

\$675,000 - 1640 N Earl Rudder, Bryan

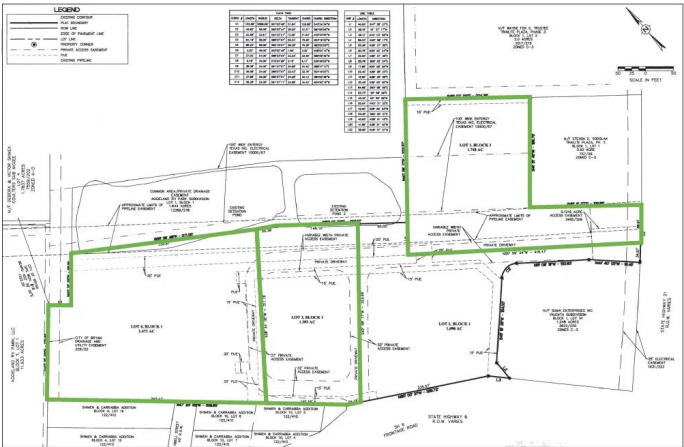
MLS® #25008731

\$675,000

Bedroom, Bathroom,
Land on 2.47 Acres

6 At 21 Crossing Commercial, Bryan, TX

Please contact Justin Whitworth with any
questions



Essential Information

MLS® #	25008731
Price	\$675,000
Acres	2.47
Type	Land
Sub-Type	Commercial
Status	Active

Community Information

Address	1640 N Earl Rudder
Area	C03
Subdivision	6 At 21 Crossing Commercial
City	Bryan
County	Brazos
State	TX
Zip Code	77808-5406

Exterior

Lot Description	Open Space
-----------------	------------

School Information

District	Bryan
----------	-------

Additional Information

Days on Market	63
----------------	----

Listing Details

Listing Agent	Justin Whitworth
Listing Office	Oldham Goodwin Group, LLC

The information being provided is for consumers' personal, non-commercial use and may not be used for any purpose other than to identify prospective properties consumers may be interested in purchasing. The data is deemed reliable but is not guaranteed accurate by the MLS. Listing information is provided by Bryan-College Station Regional MLS.