

\$1,350 - 1212 Holik Drive C, College Station

MLS® #25010060

\$1,350

2 Bedroom, 2.00 Bathroom, 990 sqft

Residential Lease on 0.16 Acres

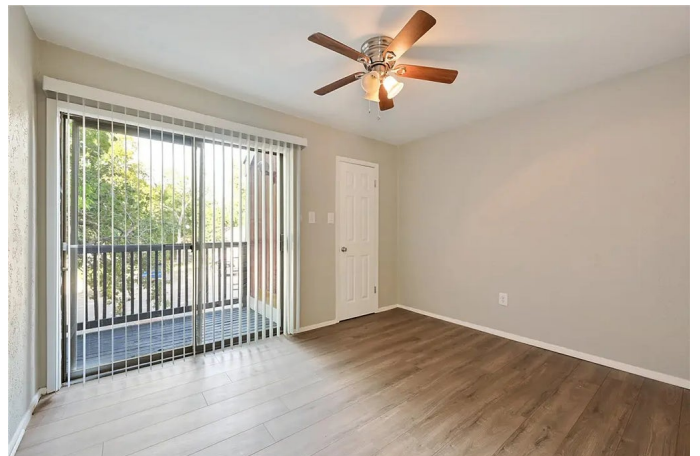
Glade East, College Station, TX

Location Location LOCATION! This 2 bedroom 1 bathroom unit is nestled between Anderson Park and Lemontree Park, where you'll find a 2.2 mile paved running path to Bee Creek park. It's around the corner from the TAMU bus stop, HEB & Target and is less than 2 miles from the Texas A&M campus. Upgraded foundation, floors, roof, and bathroom. The open concept dining and living areas open through the sliding glass door onto the balcony out front and the washer and dryer are neatly tucked away behind the pantry. Both bedrooms are upstairs and don't share wallspace while another sliding glass door opens onto a 2nd floor balcony off the front bedroom. The unit enjoys ample natural light and shares an outdoor picnic area between 1214 and 1216 Holik. Included in rent: washer, dryer, dishwasher, lawn care, garbage and sewage. WATER IS AN ADDITIONAL \$30/mo FLAT FEE (photos designated with * are of similar unit with similar finishes)

Built in 1975

Essential Information

MLS® #	25010060
Price	\$1,350
Bedrooms	2
Bathrooms	2.00
Full Baths	2



Square Footage	990
Acres	0.16
Year Built	1975
Type	Residential Lease
Sub-Type	Quadruplex
Style	Fourplex
Status	Active

Community Information

Address	1212 Holik Drive C
Area	C06
Subdivision	Glade East
City	College Station
County	Brazos
State	TX
Zip Code	77840

Interior

Interior	Carpet, Laminate
Interior Features	Laminate Counters, Window Treatments
Appliances	Dishwasher, Electric Range, Electric Water Heater, Disposal, Refrigerator, Water Heater, Dryer, Washer
Heating	Central, Electric
Cooling	Central Air, Ceiling Fan(s), Electric
Stories	Two

Exterior

Roof	Composition, Shingle
Foundation	Pillar/Post/Pier

School Information

District	College Station
----------	-----------------

Additional Information

Days on Market	22
----------------	----

Listing Details

Listing Agent	Danny Wiseman
Listing Office	NextHome Realty Solutions BCS

The information being provided is for consumers' personal, non-commercial use and may not be used for any purpose other than to identify prospective properties consumers may be interested in purchasing. The data is deemed reliable but is not guaranteed accurate by the MLS. Listing information is provided by Bryan-College Station Regional MLS.